

How to Update Digi-Wave Firmware

FIRMWARE SUPPORT

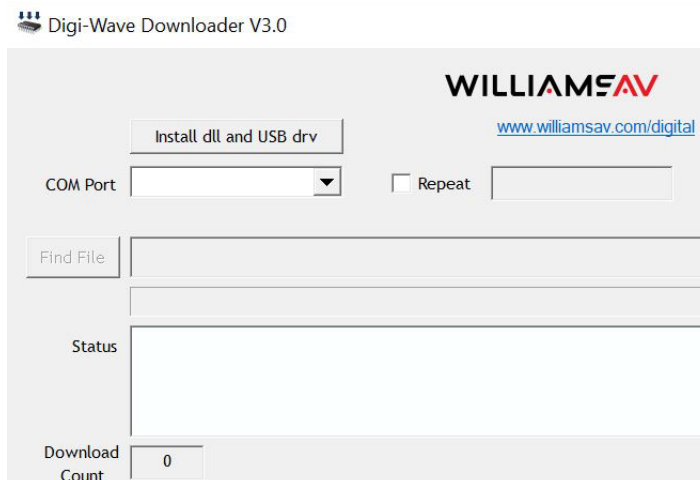
Introduction

This document is a guide for how to use the Digi-Wave update tool, including system requirements for the downloader app.

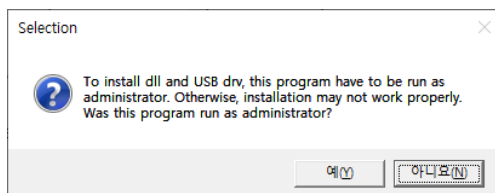
DLR 400, DLT 400 & DW T410 Update Installation Sequence

To use this program, you have to install dll and USB driver the first time.

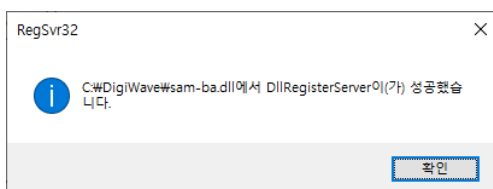
- 1) Place the provided program “Digi-Wave Downloader V3.0” and folder “install_files” in the same folder.
- 2) Run “Digi-Wave Downloader V3.0” as administrator.
- 3) Click “dll and USB drv” button if the button is activated.



- 4) A pop-up window will appear and ask if you executed this program as administrator. If you executed this downloader program as administrator, Click “Yes”.



- 5) the pop-up window below appears and the installation is complete.



Installed dll and USB driver files are saved in C:\DigiWave. Additionally, DigiWave.ini, which has the downloaded binary path information, is also saved here.

Firmware Download Sequence - DLT 400 & DW T410, DLR 400 RCH

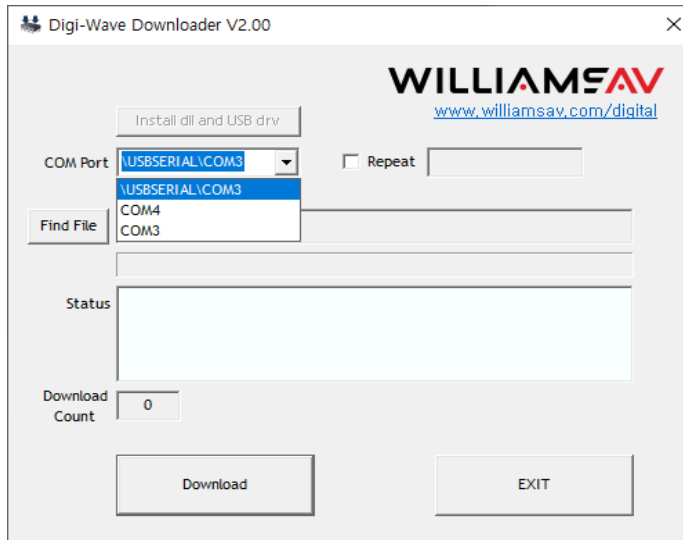
To download a binary file to DLT 400 & 410 or DLR 400 RCH, follow these steps.

- 1) Make sure the target device is turned off and the USB cable is not yet connected.
- 2) Run "Digi-Wave Downloader V3.0"
- 3) Connect the USB cable while pressing the MENU button on the product and wait about 2 seconds. The product will display "Download Mode ..." briefly.

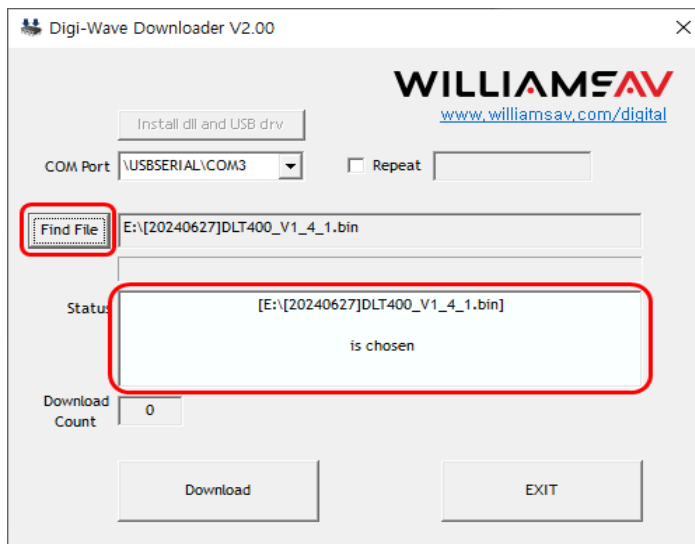


- 4) Select COM port. ("USB Serial" form)

Then release the MENU button.



Click the “Find File” button and locate the appropriate downloaded firmware file.



- 5) Click “Download” button, then it will start to download.

“Status” window will inform “Download Success” with sky-blue color if the downloading is complete.



6) Disconnected USB cable

System Requirements For The Downloader App

System Requirements – .NET Framework

The Downloader application requires **Microsoft .NET Framework version 4.6 or higher**.

- **Windows 7** includes version 3.x by default. Users must manually install version 4.6 or later.
- **Windows 10 and Windows 11** include .NET Framework 4.6 or higher by default, which is why these operating systems are recommended for the best experience.

If the application does not start correctly, download and install the latest version of the .NET Framework from the official Microsoft website, then try launching the program again